



ANNUAL REPORT

FY 2071/72 &
FY 2072/73



Sagarmatha Pollution Control Committee (SPCC)

Namche Bazar, Solukhumbu, Nepal

Phone: +977-038-540057, Fax: +977-038-540457

E-mail: info@spcc.org.np | Web: www.spcc.org.np



ACCRONYMS



BZMC	Buffer Zone Management Committee
CBO	Community-based Organizations
EBC	Everest Base Camp
ESA	Everest Summiteers Association
GMG	Garbage Management Group
HAT-J	Himalayan Trust of Japan
KCC	Khumbu Climbing Center
KMCL	Khumbu multipurpose Cooperative Ltd.

MoCTCA	Ministry of Culture Tourism and Civil Aviation
NMA	Nepal Mountaineering Association
NMGA	Nepal Mountaineering Guide Association
NTB	Nepal Tourism Board
SNP	Sagarmatha National Park
SPCC	Sagarmatha Pollution Control Committee
VDC	Village Development Committee
WWF	World Wildlife Fund

QUICK INFO

Working Areas



3 VDCs



Mountains



Peaks



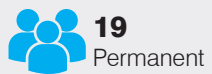
78 Rubish Bins



Waste management facility equipped
with incinerator



Non-burnable garbage storehouse



Staff

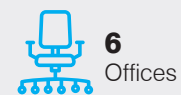
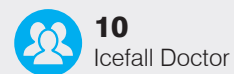


TABLE OF CONTENTS

- 11** About SPCC
- 12** OUR WORKING AREAS
- 13** Organization Structures
- 14** Our Work Stations and Staff
- 15** OUR PROGRAMS
- 15** Waste Management
- 18** Garbage management along trekking trails
- 24** Environmental Awareness Programs, Cleanup Campaigns and Workshops
- 25** Cleanup Campaigns
- 27** Monitoring & Control of illegal climbers
- 28** Khumbu Icefall Route Construction
- 30** Earthquake 2015
- 31** Press Statement
- 32** Our Partners
- 33** Financial Report





MESSAGE FROM THE **CHAIRMAN**

I am happy to present to you Annual Report of Sagarmatha Pollution Control Committee (SPCC) for the FY 2071/72 & FY 2072/73. This report gives an overview of the projects and activities implemented to improve waste management in settlements, trekking trails and mountains of Khumbu Region; mapping out a safer route through Khumbu icefall; and monitoring illegal climbers in mountains and peaks.

Waste management is ongoing, and we continue to strengthen waste management programs in our working areas within the Sagarmatha National Park and Buffer Zone by building additional waste management infrastructures, collaborating with further community based partners and continuing awareness raising and cleanup campaigns. In the last two fiscal years, we built thirty eight additional rubbish bins at various resting points along trekking trails, four non-burnable garbage collection centers in major settlements, and three portable toilets at various base camps required for proper management of solid and human wastes.

We focused on managing wastes by segregating into burnable and non-burnable categories and treating it accordingly. A three-year agreement was done with Tara Air to transport non-burnable garbage to Kathmandu free of cost for further treatment at recycling centers. Community engagement in waste management programs has been our top priority, and we continued to strengthen our partnership with garbage management partners in various settlements. With the prime objective of raising awareness on waste management, we conducted extensive annual cleanup campaigns, school programs, radio programs and workshop.

In 2015, our icefall doctors mapped out a new route from Base Camp to Camp I through the center of the icefall followed by pre-existing route to Camp II, which significantly reduces the risk of encountering serac collapses and avalanches such as the one experienced during the tragedy of the Spring 2014 season that killed 16 mountaineering guides. We continue to provide training to our icefall doctors in collaboration with Khumbu Climbing Center – a weeklong training was organized for icefall doctors in early spring this year at Everest Base Camp via a grant from Petzl Foundation. We are glad that there had been successful summits on Mt. Everest in Spring 2016 following two years of tragic disasters.

The year 2015 had been a very difficult year for Nepal because of the massive earthquake of 7.8 magnitudes that shook the country killing thousands of people and injuring many. We responded immediately at the time of disaster. Our efforts include mobilizing a team to assess the situation of EBC and route through Khumbu icefall following the devastating earthquake, collecting 4,000 kgs of debris at Everest base camp created by earthquake triggered avalanche, and providing a support of Rs. 18 lakhs to the affected communities of the three VDCs.

Our achievements are in large due to the continuous cooperation and support from our partners, committee members, management team and stakeholders. I would like to acknowledge and recognize the generous support of all, and look forward to work together to make Khumbu a clean and well-managed region.

Mr. Anil Dorjee Sherpa

EXECUTIVE **BOARD**

A new executive committee was elected for five years term in the AGM held on 29th December 2014 in Kathmandu. Mr. Ang Dorjee Sherpa was re-elected as a Chairperson for another

term. The constitution of SPCC was revised to make a provision to include 17 members in the Executive Board.

PATRON



Abbot of Tengboche Rinpoche

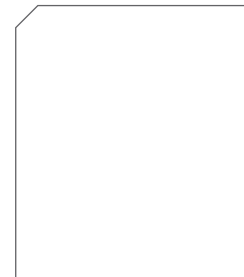
ADVISORS



Mr. Ang Phurba Sherpa
Namche



Mr. Ang Rita Sherpa
Khumjung



Mr. Sonam Geljen Sherpa
Namche

EXECUTIVE **MEMBER**



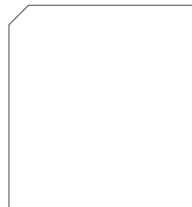
Mr. Ang Dorjee Sherpa
Chairman



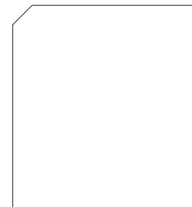
Mr. Lama Kaji Sherpa
Vice-Chairman I



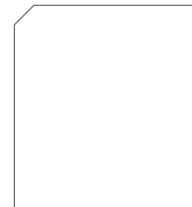
Mr. Nima Dorjee Sherpa
Vice-Chairman II



Mr. Lhakpa Geljen Sherpa
General Secretary



Mr. Laxman Adhikary
Secretary



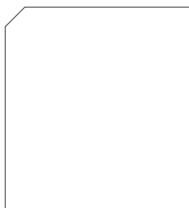
Mr. Pemba Tshering Sherpa
Treasurer



Mr. Ang Gara Sherpa
Member



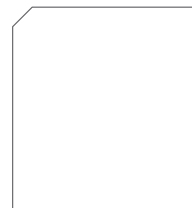
Mr. Mingma Tshering Sherpa
Member



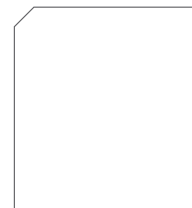
Mr. Ang Tenzing Sherpa
Member



Mr. Nima Tashi Sherpa
Member



Mrs. Ang Serki Sherpa
Member



Mr. Nawang Nuru Sherpa
Member



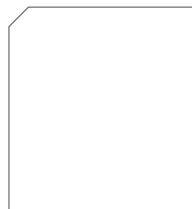
Mr. Palden Namgay Sherpa
Member



Mr. Sonam Tshering Sherpa
Member



Mr. Ang Temba Sherpa
Member



Mr. Tenzing Tashi Sherpa
Member



Mr. Ang Nuru Sherpa
Member





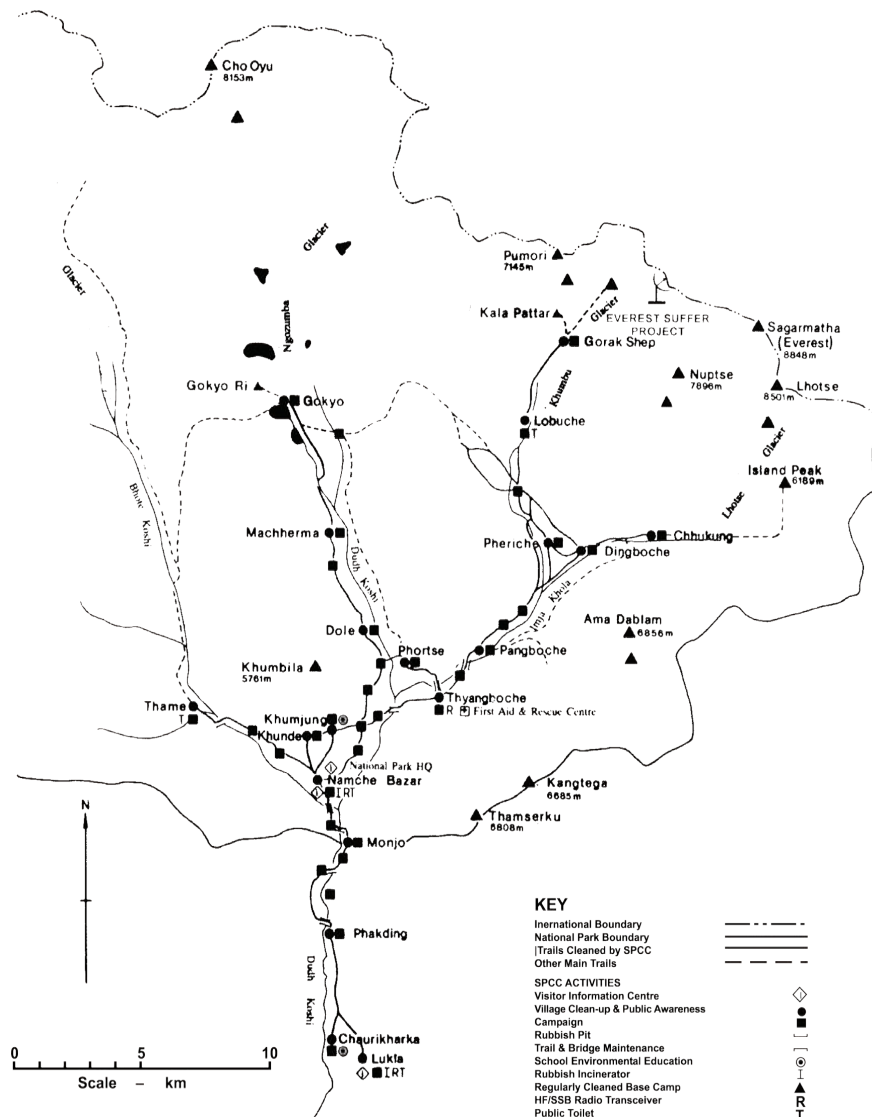
ABOUT **SPCC**

With successful ascent of Mount Everest by Sir Edmund Hillary and Tenjing Norgay Sherpa in 1953, Khumbu Region has become a popular tourist destination attracting thousands of mountaineers and trekkers from around the globe. In absence of a concrete rules and regulations as for the disposal of garbage generated by tourists, there had been a serious concern over solid waste management issues in late 1980's. This led to the formation of a local environmental institution named 'Sagarmatha Pollution Control Committee' (SPCC) – a non-profit and non-governmental organization established in 1991 by the people of Khumbu with support from WWF Nepal and Ministry of Tourism, Culture and Civil Aviation (MoCTCA).

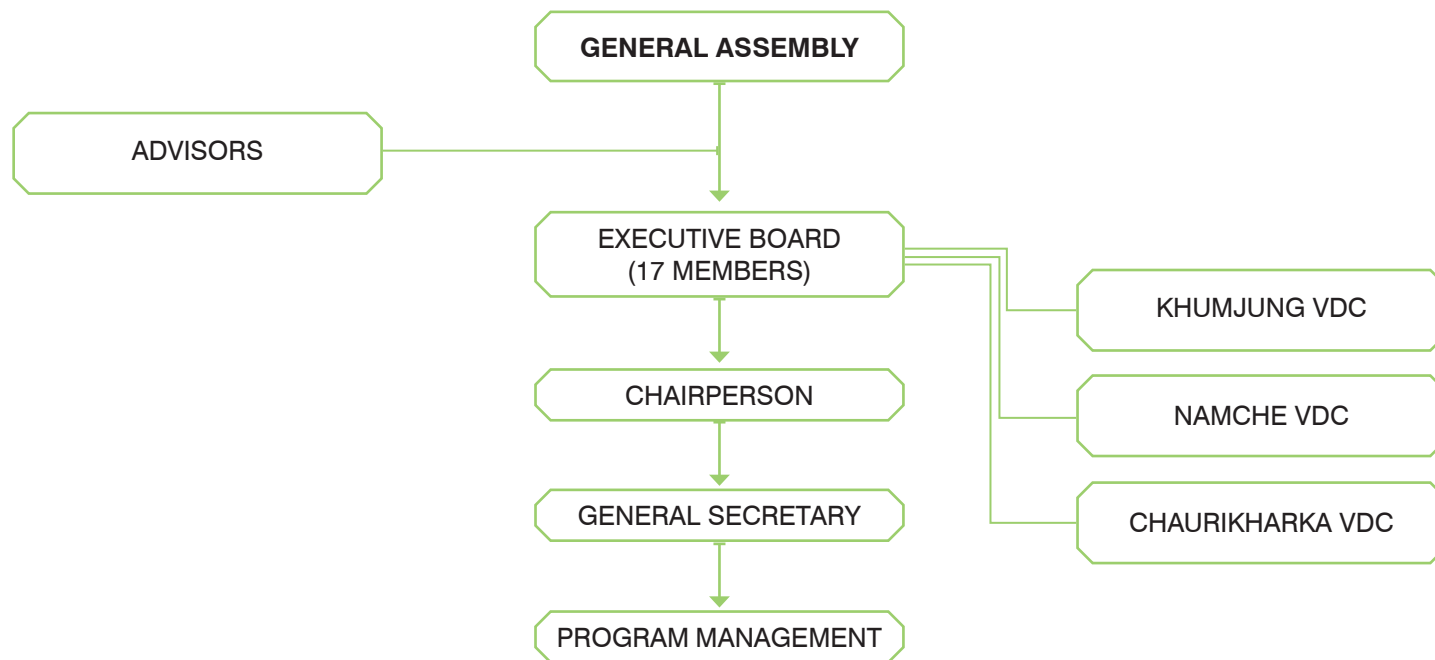
SPCC is legally registered under the District Administration Office in Solukhumbu district (Registration no- 20) and also registered with Social Welfare Council (Registration no-10989). Since its inception, it has been actively engaged in wastes management sector in the three VDCs: Chaurikharka, Namche and Khumjung of Sagarmatha National Park and Buffer Zone. SPCC is the local partner of Ministry of Tourism, Culture and Civil Aviation (MoCTCA) and Nepal Mountaineering Association (NMA) for monitoring garbage in the permit required mountains and peaks. For the last fifteen years, SPCC is also taking the responsibility of constructing and maintaining the Khumbu icefall route – the route between EBC and Camp II – on a periodical contract basis with MoCTCA. We also manage garbage in major settlements and along trekking trails in direct coordination with local communities. Currently, we focus on developing sustainable waste management strategies with a long-term goal of keeping Khumbu clean.

OUR WORKING AREAS

We work within the three Village Development Committees (VDCs): Namche, Khumjung and Chaurikharka located within the Sagarmatha National Park and Buffer Zone (SNP BZMC). Our waste management activities cover all the trekking trails, base camps of mountains and peaks, and all settlements located within the three VDCs.

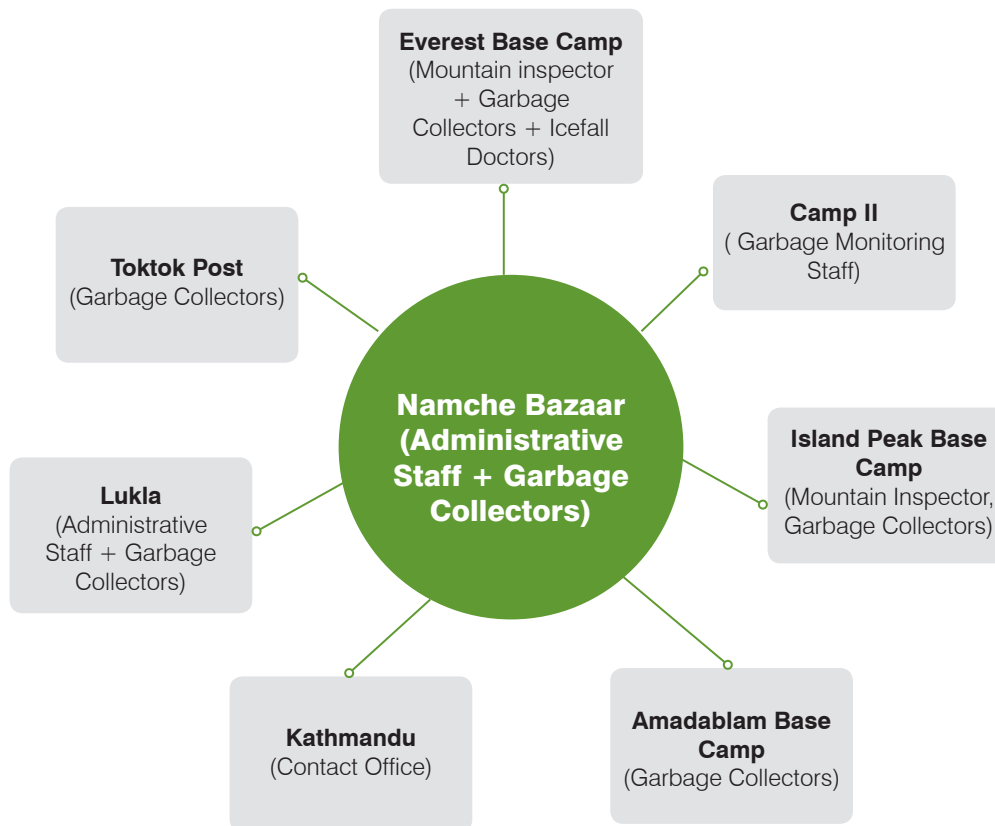


ORGANIZATION STRUCTURES



OUR WORK STATIONS AND STAFF

SPCC head office is located at Namche Bazaar. We have several branch offices and seasonal offices located at various settlements and base camp. Currently, we employ 20 permanent staff and around 40 seasonal staff to conduct our programs.





OUR PROGRAMS

WASTE MANAGEMENT

SPCC is the lead organization working in waste management sector in Khumbu Region. We conduct all waste management activities including waste collection, segregation and treatment/disposal. With support from various organizations, we have built various infrastructures required for waste management including rubbish bins, waste collection centers, recycling centers, public toilets and waste management facilities equipped with incinerators.

We conduct waste management activities in the mountains/peaks, along the trekking trails and in settlements located within our working areas.

Waste Management in the mountains/peaks

SPCC is the local partner of MoCTCA and NMA implementing the garbage declaration and clearance system for expedition groups/climbers for managing their waste in the mountains and peaks of Khumbu Region. As per the garbage declaration and clearance system, every expedition group/climber are required to register at SPCC office and declare their equipment and food list. Upon completion of their climbing period, each group/climber has to submit all burnable and non-burnable garbage to SPCC to get a garbage clearance certificate, required to get their garbage refunds from MoCTCA or NMA. SPCC incinerates burnable garbage at Namche, whereas takes the non-burnable garbage to Kathmandu for further treatment.

ACTIVITIES IN FY 2071/72 & FY 2072/73

Amendments in garbage clearance system: An amendment has been made in the garbage declaration and clearance system to make it more practical and effective. Previously, expedition groups and climbers are required to take back non-burnable garbage to Kathmandu by themselves; however starting from 2014 onwards SPCC takes responsibility for management of both burnable and non-burnable garbage generated by expedition groups applicable for both mountains and peaks of Khumbu Region.

Submission of garbage at Base Camps: Previously, expedition groups/climbers have to submit their garbage at SPCC office at Namche Bazaar except for Mt. Everest, Mt. Lhotse and Mt. Nuptse for which the garbage have to be submitted at SPCC EBC office. To strengthen the implementation of garbage management system, SPCC setup a system to collect both burnable and non-burnable garbage at Island Peak Base Camp, Lobuche Peak Base Camp and Amadablam Base Camp starting from 2014.

New rule for garbage for expedition groups in Mt. Everest (8848m): A new rule for managing garbage has been formulated by the government for Mt. Everest to control littering of garbage in the mountains, according to which every climber and support staff who ascends above base camp must bring back 8 kgs of garbage (excluding oxygen canisters) and submit it to SPCC representatives at Everest Base Camp. SPCC has taken the responsibility for implementing this rule, which come into effect in spring 2014.

New rule for garbage for expedition groups in Mt. Amadablam (6,812 m): A new rule for managing garbage has been formulated by the government for Mt. Amadablam – the second busiest mountain after Everest – to control littering of garbage above the base camp. As per the new rule, every climber and support staff who ascends above base camp must bring back 3 kgs of garbage (excluding oxygen canisters) and submit it to SPCC representatives at Amadablam Base Camp. SPCC has taken the responsibility for implementing this rule, which come into effect in autumn 2015.



Cleanup at Amadablam and Island Peak Base Camp: In November 2014, SPCC's team visited Amadablam base camp and Island peak base camp for monitoring base camps and collecting discarded old trashes. The team consulted with guides and climbers at the base camps on ways of improving garbage management and permit checking system. The team also collected 150 kgs of old trashes from Amadablam BC and 180 kgs of old trashes from Island Peak High Camp and Base Camp.

Construction and Management of toilets at base camps of mountains/peaks: SPCC also manages human waste at Everest Base Camp, Amadablam Base Camp, Island Peak Base Camp and Lobuche Peak Base Camp through portable toilets system. We have built portable toilets at various base camps of mountains and peaks. Last year, we constructed three additional public toilets: one at Amadablam base camp, one at Lobuche Peak Base Camp and another one at Lobuche Peak High Camp.

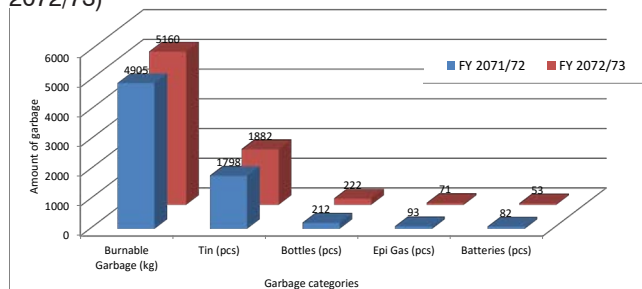


Tripartite Agreement for implementing Everest Biogas Project

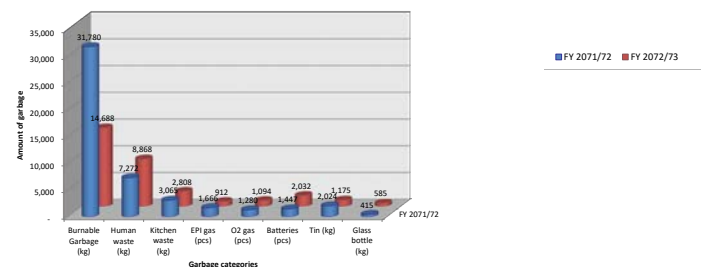
Human wastes and kitchen wastes generated by expedition groups of Mt. Everest, Mt. Nuptse and Mt. Lhotse at Everest Base Camp are being disposed in a pit near Gorakshep. For the past few years, several experts were researching into setting up a biogas plant to convert the human waste into energy. On 5th May 2016, the Everest Biogas Project Team, Sagarmatha National Park Buffer Zone Management Committee (SNP BZMC) and SPCC had a tripartite agreement for implementing the biogas project at Gorakshep, which will help in management of human waste at an altitude of 5,000 meters.

Record of Garbage

Garbage generated by climbers of NMA peaks (FY 2071/72 & 2072/73)



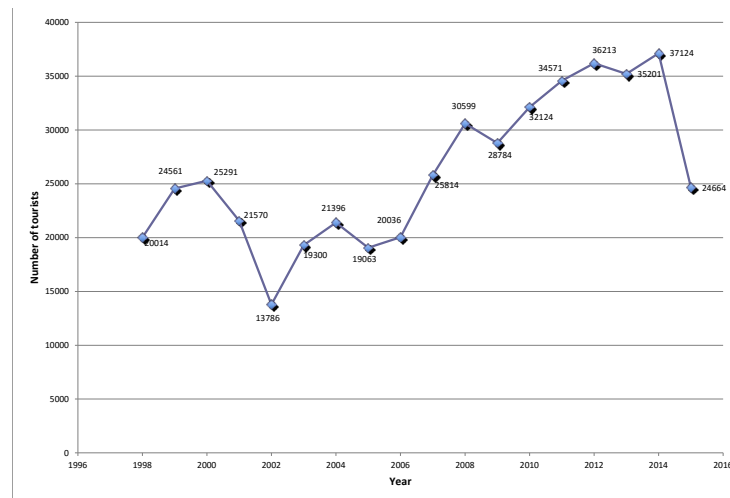
Garbage generated by expedition groups - Everest, Lhotse, Nuptse, Amadablam and others FY 2071/72 & FY 2072/73)



GARBAGE MANAGEMENT ALONG TREKKING TRAILS

With increased in number of trekkers, guides, porters each year, littering of garbage along trekking trails has also become prominent. SPCC has been taking the lead role in managing garbage along the trails by constructing garbage bins and public toilets at major resting points, and also assigning responsibilities to field staff and partner CBOs for monitoring littering of trashes along the trekking trails. (Photo: Toilets plus garbage bins at Topdada)

Tourist arrivals in Sagarmatha National Park 1998 - 2015



ACTIVITIES IN FY 2071/72 & FY 2072/73:

Construction and Management of rubbish bins: So far, we have built a total of 78 rubbish bins having segregation chambers for storing burnable and non-burnable garbage at various resting points along the trekking trails located within our working areas. We have also built rubbish bins at seven schools located within the Khumbu Region. In FY 2071/72 and FY 2072/73, we have received financial support from Sagarmatha National Park Buffer Zone Management Committee (SNP BZMC), Nepal Mountaineering Association (NMA), Nepal Tourism Board (NTB), Tenzing Natural Drinks, Shangri-La Nepal Trek, Alpine Ascents International, Vertical. Chile, Epic Private Journeys and AlpenGlow Expeditions for construction and management of garbage bins.



Management of Toilets along trekking trails: In 2013, SPCC in partnership with Eco-Himal - Saving Mount Everest Project constructed two modern toilets at Topdada and at Police Check Post near Namche for providing sanitation facility for trekkers, guides, porters and local people. We have recruited two staff to manage the toilets. We have made provision to collect fee (Rs.50 per person) for one toilet, which will be used for the maintenance of the toilet, and open one toilet for free use for public, particularly to encourage porters to use the toilet.

Garbage Management in settlements

Since its inception, SPCC has been taking various initiatives to address waste management issues in the settlements by developing appropriate strategies to manage garbage produced by business enterprises and local households. Our efforts range from providing support for digging dumping pits for garbage disposal to providing door-to-door services in major settlements and mobilizing garbage management groups (GMGs) in subsidiary settlements.



Door to door system

SPCC provides door-to-door waste collection services in Namche and Lukla – the two major settlements of Khumbu region with a minimum service charge. SPCC field staff collects garbage from these enterprises and transport it to our waste storage house or incinerator site.

Formation of Garbage Management Groups (GMGs) in various settlements:

The settlements within the Khumbu region are dispersedly located because of which it is difficult to provide waste management services directly. Being a local organization, SPCC strongly believes that involvement of local community is a must for managing wastes in effective way and sustainable manner. With the aim of involving local communities in garbage management, SPCC created GMGs in various settlements, and assigned responsibilities for them. Further, SPCC also extended its partnership with interested existing CBOs such as youth group and women's group for garbage management. With their partnership and engagement, waste management in various settlements and trekking trails has improved significantly; thus our priority is to continue to strengthen community engagement in garbage management.





ACTIVITIES IN FY 2071/72 & FY 2072/73

Door-to-door collection system: SPCC continues to provide door-to-door waste collection service to lodges, restaurants and shops at Namche and Lukla. (Photo: staff carrying garbage)

Partnership with local partners: SPCC now works with a total of 23 local partners in various settlements located within the three VDCs (12 from Khumjung VDC; 8 from Namche VDC and 3 from Chaurikharka VDC). SPCC provides financial and technical supports to partner CBOs/GMGs. Partner CBOs/GMGs either hire staff or manage garbage by themselves. Our local partners conduct regular cleanup programs in their villages, and work directly with SPCC in addressing garbage management issues in their respective settlements.

OUR LOCAL GARBAGE MANAGEMENT PARTNERS:

Khumjung VDC

Phungitanga Garbage Management Group, Lausasa /Phugitanga
Tengboche Gonpa Management Committee, Tengboche
Amadablam Youth Group, Pangboche
Khumbu Alpine Conservation Committee (KACC), Dingboche
Lobuche Garbage Management Group, Lobuche
Gorakshep Area Development Committee, Gorakshep
Gokyo Lake Management Group, Gokyo
Machermo Porter Shelter Organizer, Machermo
Dole Pragati Samuha, Dole
Lurepeak Women's Group, Phortse
Khumjung Youth Group, Khumjung
Khunde Community Club, Khunde

Namche VDC

Chaurcamp Garbage Management Group, Chaurcamp
Namche Youth Group, Namche
Namche Women's Group, Namche
Phurte Women's Group, Phurte
Thamo Women's Group, Thamo
Sumdurpeak Saving & Credit Cooperative, Thame
Snow Leopard Conservation Saving & Credit Cooperative, Thameteng
Lungden Garbage Management Group, Lungden

Chaurikharka VDC

Himalayan Youth Club, Lukla
Thamserku Women's Group, Monju/Chumua
Danfe Women's Group, Phakding

Waste Segregation, Treatment and Disposal

SPCC continues to focus on strengthening proper system for waste segregation at the base camps, along trekking trails and in various settlements so that all types of wastes don't end up in a dumping pit. Wastes are segregated into two categories: burnable and non-burnable at source and treated accordingly. We incinerate burnable garbage at our waste management facilities; whereas non-burnable garbage are either reused or recycled at source or taken to Kathmandu for further treatment.



ACTIVITIES IN

FY 2071/72 & FY 2072/73

System for waste segregation: All our garbage bins constructed along the trekking trails have two compartments for storing burnable and non-burnable garbage separately. As per our garbage declaration and clearance system, all waste generated by expedition groups/climbers needs to be segregated and submitted to SPCC representatives to get a garbage clearance certificate. In settlements, our staff and local partners segregate the waste into burnable and non-burnable categories. The non-burnable garbage are transported to our non-burnable centers at Namche, Pangboche, Pheriche and Phakding.

Waste Collections Centers: SPCC constructed non-burnable collection centers at Namche, Lukla, Phakding, Pangboche and Pheriche with financial support from SNP BZMC. In request from our local partners, we have provided financial support to them to dig pits in various settlements for storing garbage as per requirements. (Photo: non-burnable waste collection center at Pangboche, Namche)

Waste Management Facilities: We have two waste management facilities equipped with incinerator located at Namche and Lukla. The waste management facility at Namche was severely damaged due to the massive of April 25th 2016 requiring major maintenance. Our incinerator at Lukla supported by HAT-J in 1997 was not working properly; plans are underway for a new incinerator at Lukla. A request for funding support was provided to HAT-J, and they have agreed to provide partial funding support to set up a new incinerator with hot shower facility at Lukla. (Photo: Meeting with HAT-J in Kathmandu)

Recycling Projects: SPCC in partnership with Khumbu Multi-purpose Cooperative Limited (KMCL) started recycling aluminum cans to

produce aluminum souvenirs. Souvenirs are available for sale at our outlet at Namche Bazaar. We are also looking for potential recycling projects, such as recycling of papers to produce briquette and recycling plastic wrappers. (Photo: Recycled aluminum souvenirs)

Production of Cloth Bag: SPCC in partnership with Himalayan Youth Club has started manufacturing cloth bag at Lukla. This initiative is align with our plastic bag campaign within the SNP BZMC.

Transportation of non-burnable garbage to Kathmandu: We have made arrangement for transporting non-burnable wastes to Kathmandu as per our agreement with Ministry of Tourism, Culture and Civil Aviation (MoCTCA) and Nepal Mountaineering Association (NMA). We transported 4800 kgs of non-burnable waste to Kathmandu Metropolitan City (KMC) in 2015. (Photo: non-burnable garbage)

Agreement with Tara Air to transport non-burnable garbage to Kathmandu: SPCC and Tara Air signed an agreement to transport non-burnable garbage from Lukla to Kathmandu free of costs for three years. SPCC has setup a waste segregation system to segregate burnable and non-burnable garbage for sustainable management of waste in the Khumbu Region. As it is environmentally not appropriate to dispose non-burnable garbage in the mountains, SPCC plans to transport non-burnable garbage to Kathmandu for further treatment at recycling centers. As a part of Corporate Social Responsibility (CSR), Tara Air is supporting SPCC to transport non-burnable garbage from Lukla to Kathmandu. (Photo: non-burnable garbage transporting to Kathmandu/ Tara Air)

ENVIRONMENTAL AWARENESS PROGRAMS, CLEANUP CAMPAIGNS AND WORKSHOPS

SPCC has been conducting various awareness programs to aware the local communities, trekkers, guides, porters and students by organizing annual cleanup campaign, workshops, celebrating World Environment Day with school Eco clubs at schools, and through radio programs. The main objective of these programs is to raise awareness and make people more responsible for garbage management.



ACTIVITIES IN FY 2071/72 & FY 2072/73:

CLEANUP CAMPAIGNS:

“Khumbu Public Awareness Raising Cleanup Campaign 2071”

A total of 109 representatives from various organizations took part in our annual “Khumbu Public Awareness Raising Cleanup Campaign 2071” held from 20-24 June 2014 in the route of Namche Bazaar – Thame – Lungden – Renjola pass (5340 mtrs) – Gokyo – Dole - Namche Bazaar. The cleanup campaign was organized in coordination with SNP BZMC. Participants were divided into four groups (Everest, Lhotse, Nuptse and Pumori) led by Eco club network representatives. The participants collected a total of 1,395 kgs garbage (1,196 kg burnable and 199 kg non-burnable) in the five days long cleanup campaign. The campaign was concluded at Namche Bazaar on 24th June 2014. Mr. Ang Dorjee Sherpa, Chairperson of SPCC and Mr. Sonam Gyalzen Sherpa, Chairperson of SNPBZMC presented Certificate of Appreciation to all the participants. The following awards were presented during the concluding program:

Best Team (cash prize of Rs. 33,000/-) = Pumori Team

Most Discipline Team (cash prize of Rs. 22,000) – Nuptse Team

Appreciation Award to Team Leaders from each group

Best Team Member from each group

Special Award presented to youngest and oldest participants

Appreciation Award to Volunteers

“Khumbu Public Awareness Raising Cleanup Campaign 2073”

A total of 115 representatives from various organizations took part in our annual “Khumbu Public Awareness Raising Cleanup Campaign 2073” held from 13-20 June 2016 in the route of Namche Bazaar – Tyengboche – Pheriche – Lobuche – Gorakshep - Everest Base Camp – Khongma La Pass – Chukung – Island Peak Base Camp – Dingboche – Phorste - Namche Bazaar. The cleanup campaign was organized in partnership with NMA/Sagarmatha Chapter. Participants were divided into three groups (Everest, Amadablam and Thamserku) led by Eco club network representatives. The participants collected a total of 2,578 kgs garbage (1,560 kgs burnable and 1,018 kgs non-burnable) in the eight days long cleanup campaign. The campaign was concluded at Namche Bazaar on 20th June 2016. Certificate of Appreciation was presented to all the participants. The following awards were also presented during the concluding program:

Best Team (cash prize of Rs. 35,000/-) = Thamserku Team

Appreciation Award to Team Leaders

Best Team Member from each group

Special Award presented to oldest participant



Environment Day Celebration: On the occasion of World Environment Day on 5th June 2016, SPCC in coordination with the Eco club Network (a network of 14 school eco clubs of Khumbu) organizes awareness-raising programs at various schools each year. Awareness raising program including cleanup campaign and painting competition was organized at Ghat School on the 5th of June 2014 and at Lukla School on 5th June 2016 marking the World Environment Day.

Radio Programs: SPCC conducted awareness-raising programs on waste management through Khumbu fm twice a week. Worey Lungbi Lapsey - a Sherpa language based program targeting the local communities and Paathsala – a program for students were produced and broadcasted through Khumbu fm.

Workshop on “Issues and Challenges of Managing Waste/Garbage in Khumbu Region (Role of different stakeholders)”

The Sagarmatha Pollution Control Committee (SPCC) conducted a half-day interactive workshop on “Issues and Challenges of Managing Waste/Garbage in Khumbu Region (Role of different stakeholders)” on 1st February 2016 at Malla Hotel, Lainchaur, Kathmandu. Hon’ble Minister of Tourism, Culture and Civil Aviation (MoCTCA) Mr. Ananda Prasad Pokharel inaugurated the workshop. The workshop brought together various national and local level tourism stakeholders including representative of Ministry of Tourism, Nepal Tourism Board, Nepal Mountaineering Association (NMA), Trekking Agents Association of Nepal (TAAN),

Everest Summiteers Association (ESA), Sagarmatha National Park (SNP), Sagarmatha National Park Buffer Zone (SNPBZ) and various community based organizations. The workshop discusses on the current issues and challenges of managing garbage in Khumbu Region, roles and responsibilities of various stakeholders involved and the way forward.

Participation in Diamond Jubilee Celebration of Mt. Lhotse and Mt. Manasalu

SPCC participated in the diamond jubilee celebration of Mt. Lhotse and Mt. Manaslu in Kathmandu held on 30th April 2016.



MONITORING & CONTROL OF ILLEGAL CLIMBERS

Since 2000 Sagarmatha Pollution Control Committee (SPCC) and Nepal Mountaineering Association (NMA) have been working together on the 'Illegal Climbing Control Project' in the Khumbu Region. SPCC is the authorized local institution responsible for controlling illegal climbers and monitoring garbage in 9 peaks registered under NMA's 'Group A' and 8 peaks registered under NMA's 'Group B' categories.

SPCC regularly checks climbing permits of climbers at the base camps of NMA registered peaks. All climbers are required to keep their permit with them during their climbing period. If any of the climbers are found to be involved in illegal climbing, they have to face prosecution as per the laws governing regulations of Nepal. SPCC employs an inspection officer and sub-inspection staff at Island peak base camp to monitor illegal climbers. Since then the number of illegal climbers have dropped down.

ACTIVITIES IN FY 2071/72 & FY 2072/73:

A new agreement for 'illegal climbing control project' was done between Mr. Ang Tshering Sherpa, Chairperson of NMA and Mr. Ang Dorjee Sherpa, Chairperson of SPCC valid for two years. As per the new agreement, SPCC will be the responsible for controlling illegal climbers in NMA registered peaks in Khumbu Region, managing garbage in the peaks through garbage clearance system, and fixing ladder in the crevasse of Island peak.



KHUMBU ICEFALL ROUTE **CONSTRUCTION**

Since 1997, SPCC has been contracted by the Ministry of Culture, Tourism and Civil Aviation (MoCTCA) to set the climbing route through the Khumbu Icefall each year. This route between Base Camp and Camp 2 passes over deep and dangerous crevasses and is used to climb Mt. Everest, Mt. Nupste and Mt. Lhotse. In every climbing season, our icefall doctors – highly skilled, courageous and experienced Sherpas - make this route by fixing ropes and aluminum ladders. (Photo: icefall photo)



ACTIVITIES IN FY 2071/72 & FY 2072/73:

Icefall Fee: Khumbu Icefall Route fee assessment committee (MoCTCA, NMA, ESA, TAAN, NMGA and SPCC) sets the fee for Khumbu Icefall Route. As per the revised fee applicable from spring 2014, each member of expedition team has to pay US\$600 for using the route in spring climbing season and a combined sum of US\$25,000/- for climbers to set the route in autumn and winter season.

Icefall Doctors' Training: Our icefall doctors have been receiving training at Khumbu Climbing Center (KCC) in Phortse for the past four years. This year, the training was organized at Everest Base Camp from 7th March to 13th March 2016 via a grant from the Petzl Foundation and Sherpa Foundation. Senior instructors from KCC - Funuru Sherpa, Panuru Sherpa and Danuru Sherpa - taught ten icefall doctors on rescue technique, rope systems and anchor placement. SPCC organized a special program thanking the instructors, training supporters, and climber Greg Paul from USA who donated climbing gears and equipment to icefall doctors at Everest Base Camp on 19th April 2016.



Avalanche in Khumbu Icefall: An avalanche occurred at the Western Cwn in Khumbu Icefall on 16th April 2015 killing 13 expedition Sherpas in the deadly icefall. Expedition groups were called off after the avalanche.

New Route through the Icefall in 2015: SPCC's Icefall Doctors set a new route through the Khumbu Icefall in 2015. The previous route used until 2014 ran along the Lola pass to the left side of the Icefall. Aided by aerial photographs taken by David Breashears following 2014 avalanche, they mapped out a new route from Base Camp to Camp I through the center of the icefall followed by pre-existing route to Camp II. The central route significantly reduces the risk of encountering serac collapses and avalanches such as the one experienced during the tragedy of the Spring 2014 season. However, the new route does present new challenges, particularly the need to cross more crevasses and the increased use of both vertical and horizontal ladders. The new route involves steeper ladder climbs and longer climbs involving multiple ladders joined together. The SPCC therefore recommended operators, workers, and climbers strictly exercise the following safety precautions: 1) have only one climber on any ladder at any given time; 2) lighten and limit loads carried by individual high altitude mountain workers so as not to overload the ladders; 3) strictly adhere to safety measures such as clipping harnesses to safety ropes while on ladders.



EARTHQUAKE 2015

On 25th April 2015 at 11:56 AM local time, a massive earthquake of 7.8 magnitudes struck at Barpak, 76 km northwest of Kathmandu on Saturday. The catastrophic earthquake was followed by hundreds of aftershocks including a major aftershock of 7.3 magnitudes on 12th May 2015 with the epicenter near Mount Everest. It killed around 9,000 people, injured more than 20,000, left more than 2 million homeless and damaged over 900 health facilities and 8,300 schools. The earthquake has caused major damages at our head office in Namche and station office in Toktok. Our seasonal office at Everest base camp was swept away by the earthquake triggered avalanche.

Avalanche at Everest Base Camp: The 7.8 magnitude earthquake of 25th April 2015 triggered a massive avalanche at Everest Base Camp taking the lives of 18 individuals and injuring dozens of climbers. Everest expeditions were called off after SPCC's thorough investigation of the situation of the Icefall following the devastating earthquake (Press statement attached)

Earthquake Relief Announcements: The massive earthquake of 7.8 magnitude struck in Nepal on 25th April 2015, followed by a series of

aftershocks hugely affected the communities within our working areas, the three VDCs (Chaurikharka, Namche and Khumjung) of Khumbu Region. In response to this devastation, the Sagarmatha Pollution Control Committee (SPCC) cancelled the 2015 annual cleanup and awareness raising campaign scheduled for June, and provided the allocated budget of Rs. 1,800,000 (Eighteen lakhs) to the affected communities of the three VDCs: Chaurikharka, Namche and Khumjung as immediate support. SPCC also provided financial support equivalent to a month salary to our permanent staffs as many suffered major physical damages to their personal property because of the earthquake.

Post earthquake Debris Collection at EBC: The avalanche swept away camps of many commercial expedition groups creating tons of debris on the Khumbu glacier. The Sagarmatha Pollution Control Committee (SPCC) mobilized a cleanup team at Everest Base Camp to clear all the debris from the glacier soon after the avalanche. The team collected approximately 4,000kgs of debris from the glacier and transported to SPCC Namche waste management station for further treatment.

PRESS STATEMENT

5th MAY 2015

The Icefall Doctors team and SPCC Chairperson Ang Dorjee Sherpa have conducted a survey of the situation at Everest Base Camp and the Khumbu Icefall, and have now advised the Ministry of Culture, Tourism and Civil Aviation and concerned stakeholders not to take further risks by continuing work on the mountain.

After thorough assessment of the damage at Base Camp and the Icefall caused by the massive earthquake and avalanche of 25th April 2015, the SPCC has concluded that the risk of setting a route in the current situation cannot be taken. This decision was made with several factors in mind:

Any possible efforts on the Icefall would take a minimum of two weeks from commencement of work to even establish the route to Camp II. Given the narrow window of time before rising temperatures and early monsoon weather conditions make Everest climbing impossible, it seems unlikely that the route could be set in time to enable summits. Historically, in most Spring seasons by this point climbers would already have been approaching the South Col.

All medical teams including the Himalayan Rescue Association have already left Base Camp for the season, and it is inadvisable to carry on with work given the increased risk of aftershocks and an exceptionally unstable Icefall without medical support in case of emergencies.

During the avalanche on 25 April, SPCC's Base Camp and camps of many other commercial expeditions were completely swept away. Currently, there is a lack of adequate equipment and supplies needed to begin resetting of the Icefall route immediately.

The SPCC Icefall Doctors are only responsible for setting the route until Camp II. Conversations for the teams that would be responsible for setting the route above that indicate that they also do not have sufficient equipment and resources to do this rope fixing. Therefore, even if the SPCC were to set the route across the Icefall and up to Camp II, there may not be sufficient human resources and time to set routes to the summit.

Many camps on Everest were swept away by the avalanche. This debris will now need to be retrieved and removed before it is absorbed by the glacier. This cleanup will be the SPCC's top priority and it will take couple of weeks to clear all the debris from the glacier.

Finally, and most importantly, majority of the climbers have already called off their expeditions and many of the Icefall Doctors as well as the local support staff in the remaining expedition teams have suffered heartbreaking family deaths or injuries as well as earthquake-related damage to property. This is an unprecedented national tragedy; the SPCC expresses heartfelt condolences for those who have suffered loss both on Everest and around the country.

FINANCIAL REPORT

INCOME SOURCES

Khumbu Icefall Route Fee: SPCC collect fees from expedition climbers attempting Mt. Everest, Mt. Lhotse and Mt. Nupste for using the Khumbu Icefall Route. A considerable amount of money from this project goes into route construction, while a limited portion of money left from this project is used to finance SPCC's waste management projects in the Khumbu Region.

Waste Management Fee: SPCC charges waste management fees for providing door-to-door services at Lukla and Namche. We also collect waste management fees for transportation and management of garbage generated by expedition groups and climbers.

Sales of Trek Certificate of Achievement: SPCC and SNP BZMC jointly prepared a Trek Certificate of Achievement as a souvenir for trekkers visiting the Khumbu Region. Certificates are available for sale at Police Check Post at the entrance of Namche Bazaar and at SPCC office in Namche or Lukla at the rate of NRs. 350/-. All proceeds from the sale of certificate go to Solid Waste Management Fund to support SPCC's waste management activities in Khumbu Region.

Garbage management fund from Sagarmatha National Park Buffer Zone Management Committee (SNP BZMC): SPCC receives garbage management fund from SNP BZMC annually as a support for management of garbage within the Park and Buffer Zone area.

NMA/SPCC Joint Project: SPCC and NMA have been working together on the 'Illegal Climbing Control Project' in the Khumbu Region since 2000. NMA provides annual funds to SPCC for controlling illegal climbers in NMA registered peaks in Khumbu Region, managing garbage in the peaks through garbage clearance system, and fixing ladder in the crevasse of Island peak.

Funds for waste management program from partner agencies: SPCC also receives sporadic funding support from various government agencies and I/NGOs for our waste management activities in Khumbu. In FY 2071/72 & FY 2072/73, we received certain financial support from MoCTCA, NMA, NTB, VDCs and trekking agencies.

MAJOR EXPENDITURE AREAS

Khumbu Icefall Route Construction: One of the major expenses of SPCC is the fixing the route in Khumbu Icefall – the route between Everest Base Camp and Camp II - for expedition climbers in climbing season.

Waste Management Activities: Another major expenses is conducting waste management activities such as collection, segregation, disposal and recycling of wastes generated by trekkers, climbers, support staff and local communities in the three VDCs through our staff and local partners.

Waste Management Infrastructures: Another major expenditure area is constructing and managing waste management infrastructures and facilities such as garbage bins, garbage collection centers, garbage pits, incinerators and toilets in various places as required.

Environment Awareness and Cleanup Campaigns: SPCC regularly conducts environment awareness and cleanup campaigns to aware students, local people, trekkers and porters.

Monitoring and Control of Illegal Climbers: SPCC regularly checks climbing permits of climbers attempting various mountains and peaks at Namche, Lukla, Island Peak Base Camp, Lobuche Base Camp, Amadablam Base Camp and Everest Base Camp to monitor and control illegal climbers.

FINANCIAL REPORT:

Financial audit report of Nepali FY 2070/71 and FY 2071/72 is attached. This corresponds to financial statement of mid of 2014 till mid of 2016

Income Particular	Sch #	Sub-Total	Current Year Total Amount	Previous Year Total Amount
Grant received			4,473,220.00	
a. NMA/SPCC Project Management		1,855,320.00		810,214.00
b. Buffer Zone (SWP2)		1,500,000.00		2,000,000.00
c. Contribution, (Eco Himal, EDTL & Personal)				900,000.00
e. Nepal Tourism Board		708,000.00		592,879.00
Compensation from Insurance Co.				
Income from Internal activities				
Membership fee			22,540.00	1,002,000.00
a. VIC Lukla & Namche TAC Sales			700,000.00	61,687.01
b. Interest Income			17,100.00	13,120.00
c. Income photocopy & printing			102,000.00	
d. Miscellaneous income			24,274,048.00	21,275,500.00
e. Khumbu icefall route charge			3,201,144.00	1,146,398.00
f. Garbage management fee			3,498,864.00	
g. EBC jobs & Human waste management				
Total Income			36,293,221.00	25,809,268.01
Expenditure				
Local Route Maintenance	8		9,774,183.00	8,267,767.20
Bio-Tourism Inspection Monitoring Exp.	9		1,043,000.00	243,860.00
Garbage Management Expenses	10		10,807,627.35	8,447,799.28
Community Mobilization Expenses	11		206,120.00	230,525.00
HAT-J SPCC Project Management Expenses	12		1,559,362.46	1,501,500.68
NMA/SPCC Project Management Expenses	13		1,181,211.11	2,026,762.43
Office Running Cost	14		4,619,695.90	2,325,558.26
Local Culture and Customs Conservation Support	15		24,250.00	
TAC & VIC Namche	16		684,998.25	1,873,907.00
Earthquake relief fund expenses			1,600,000.00	
Total Expenditure			31,600,448.10	25,235,762.92
Depreciation for the Year			4,692,772.90	388,280.00
Excess Income over Expenditure added To Balance Sheet			36,293,221.00	29,809,268.01
Total				
This is the Income & Expenditure account referred to in our report of even date. Schedules 1 to 19 and notes to account are an integral part of this report.				
Ang Dorjee Sherpa Chairman			Lhakpa Gelzen Sherpa General Secretary	Pemba Tahering Sherpa Treasurer
Nishan Shrestha Finance and Administrative				
			For Bhumi Lama & Co. Regd. Auditors Date: 1/7/2-07	

Liabilities	Sch	Current Year Amount	Previous Year Amount
Income over Exp. up to last year		11,689,161.80	7,504,636.91
Income over Exp. For the year		4,692,772.90	4,184,524.89
Total		16,381,934.70	11,689,161.80
Application Of Fund			
Particulars		Current Year Amount	Previous Year Amount
Fixed Assets	1	4,454,040.51	2,048,722.52
Total		4,454,040.51	2,048,722.52
Current Assets, Loans & Advances			
Cash & Bank Balance	2	7,960,185.45	8,274,988.54
Staff Advance	3		(15,000.00)
Stock	4	295,800.00	295,800.00
Deposit	5	327,000.00	327,000.00
Account Receivable	6	2,658,779.75	(633,854.25)
Endowment Fund		1,466,504.99	1,466,504.99
Total Assets		12,708,270.19	9,715,439.28
Less: Current Liabilities			
Sundry Creditors	7	(780,376.00)	(75,000.00)
Total		16,381,934.70	11,689,161.80
This is the Balance Sheet referred to in our report of even date. Schedules, Notes & Annex are an integral part of this report.			
Ang Dorjee Sherpa Chairman		Lhakpa Gelzen Sherpa General Secretary	Pemba Tahering Sherpa Treasurer
Nishan Shrestha Finance and Administrative			
		For Bhumi Lama & Co. Regd. Auditors Date: 1672-02-28	

OUR PARTNERS:

Ministry of Culture, Tourism and Civil Aviation (MoCTCA)

Sagarmatha National Park (SNP)

Sagarmatha National Park Buffer Zone Management
Committee (SNP BZMC)

Nepal Mountaineering Association (NMA)

Nepal Tourism Board (NTB)

VDCs (Khumjung, Namche and Chaurikharka)

Eco Himal

HAT-J

EVK2CNR

Khumbu Multipurpose Cooperative Limited (KMCL)

Companies (Tenzing Natural Drinks, Shangri-La Nepal Trek,
Alpine Ascents International, Vertical. Chile, Epic Private
Journeys and AlpenGlow Expeditions)

Tara Air

Community based Organizations (Youth Group, Women
Group, Garbage Management Groups)

Eco Club Network (A network of eco clubs of twelve schools
in Khumbu)

PROMOTIONAL MATERIALS:

TAKE ONLY MEMORIES
LEAVE ONLY FOOTPRINTS

"LET'S KEEP KHUMBU CLEAN"
Be a part of our campaign by purchasing
a Trek Certificate of Achievement

Trek Certificate of Achievement is jointly prepared by Sagarmatha Pollution Control Committee (SPCC) and Sagarmatha National Park Buffer Zone Management Committee (SNPZMBC) as a souvenir for trekkers visiting the Khumbu Region.

All proceeds from the sale of certificates go to Buffer Zone Management Fund to support SPCC's waste management activities in the Khumbu Region.

Certificates available for sale at Police Check Post at the entrance of Namche Bazaar or at SPCC office in Namche and Laila.

Price NPRs. 350/- Only

THANK YOU FOR YOUR VISIT.

TCA

Travel Green!

Buy a locally made recycled aluminum souvenirs
and help us save the environment

What is aluminum recycling project?
With the sole purpose of recycling aluminum cans, Khumbu Multipurpose Cooperative Ltd and Sagarmatha Pollution Control Committee started the 'Aluminum Can Recycling Project' with support from Eco Himal Saving Mount Everest Project.

Why buy a recycled aluminum souvenirs?

- It is a locally made recycled product.
- It helps to save our environment as each souvenir is made by recycling at least 15 aluminum cans
- It provides direct employment opportunities to marginalized women

Where to find recycled aluminum souvenirs?
Recycled aluminum souvenirs are available for sale at the following outlet in Namche.

Memories of Khumbu

Souvenirs made from recycled aluminum cans
Tel: 038-540473

We can't change the past but we can change the future, always remember to recycle.

Recycled Products



Sagarmatha Pollution Control Committee (SPCC)

Namche Bazar, Solukhumbu, Nepal

Phone: +977-038-540057, Fax: +977-038-540457

E-mail: info@spcc.org.np | Web: www.spcc.org.np